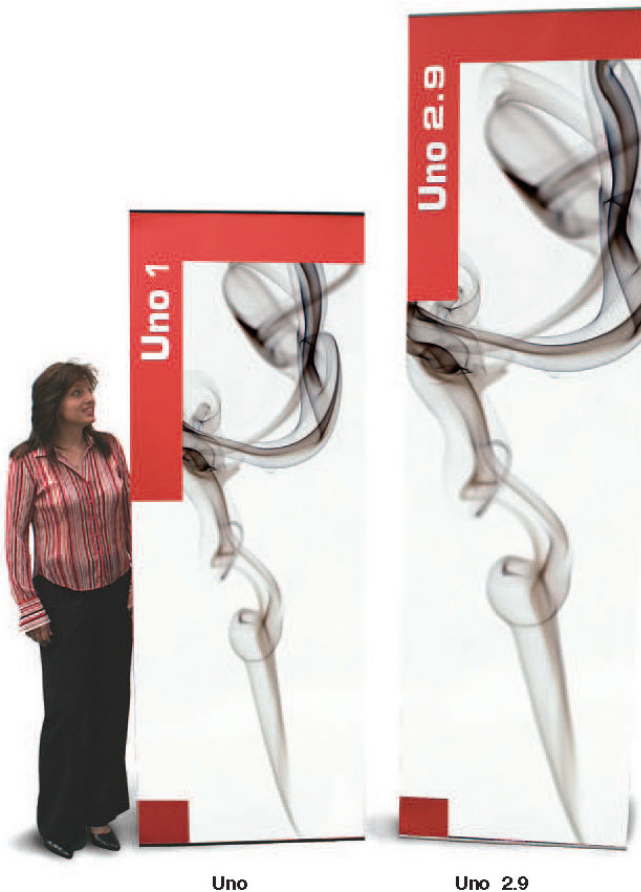


Uno & Uno 2.9

A very popular and highly versatile tension banner stand that is lightweight, portable and very simple to use. Available in six width options with adjustable height, Uno is flexible enough to carry a wide variety of graphics. The Uno 2.9 offers an extremely cost-effective way of making a big impact.

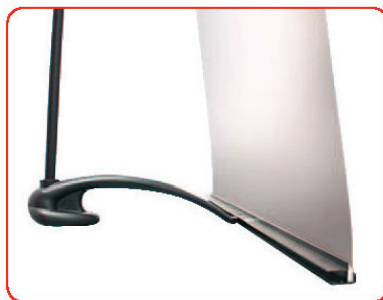


Uno

Uno 2.9

features & benefits

- Lightweight components
- Telescopic pole for adjustable height
- Quick to assemble and easy to use
- Includes carry bag/tube
- Units can join together to form a seamless graphic wall (Require BR404 joining bars and EM400 edge to edge magtape)



Linked Uno's forming a seamless graphic wall

hardware specifications

Hardware Dimensions (mm):

Uno
2210 (h - max) x 400-1500 (w) x 365 (d)
Uno 2.9
2910 (h - max) x 600-1500 (w) x 365 (d)

Weight:

Uno - 4.5kg approx
(800mm width including carry bag)
Uno 2.9 - 5kg approx
(800mm width including carry bag)

graphic specifications

Visible Graphic Dimensions (mm):

Uno - 2200h (max) x 400 - 1500 (w)
Uno 2.9 - 2900h (max) x 600 - 1500 (w)

Minimum Graphic Heights:

Uno - 850mm
Uno 2.9 - 900mm

Graphic Substrate:

Recommended material thickness
between 225 - 300 microns

additional info

Included in kit:

Top rail, bottom rail, stabilising foot, telescopic pole set, wrap and carry bag/tube

Availability:

Powdercoated Black

Seamless graphic walls:

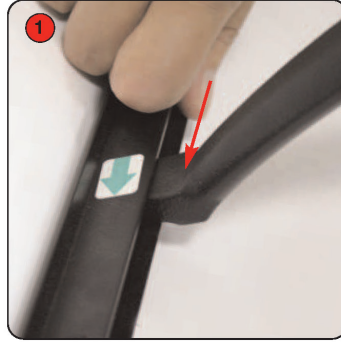
Require BR404 joining bars and EM400 edge to edge magtape

Assembly Instructions

Bannerstand Assembly



Kit includes: top rail, bottom rail, stabilising foot, telescopic poles, wrap and carry bag/tube



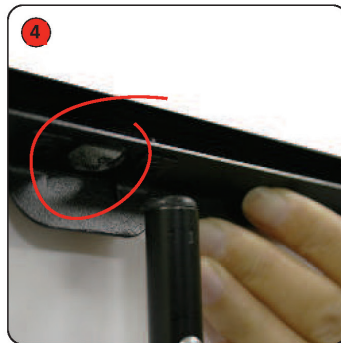
Take the stabilising foot and slide into the bottom rail in the direction of the green arrow until it is centrally positioned and locked into place.



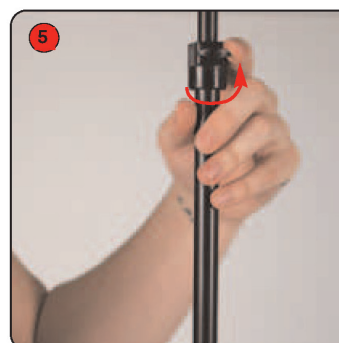
Slot the bottom of the telescopic pole into the foot.



Lengthen the pole by pull out each section, pulling out the pole to the desired height and then twist the thumb screw to secure pole into place



Carefully unroll the graphic and secure into position by locating the top rail hole with the telescopic pole.

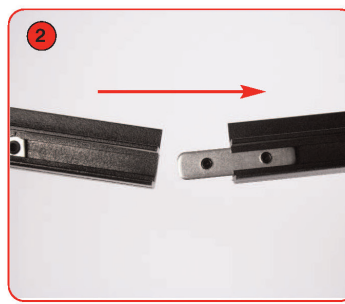


Repeat Step 3 if necessary to tension the graphic image.

Joining bar Assembly



To attach the horizontal joining bar insert the bar into one of the base sections of the stand.



Repeat this with the second base section, align the horizontal joining bars so they are in the centre between both rails



Simply tighten the grub screws on both sides to secure the joining bars in place.