

Excaliber / Excaliber 2



Stylish design and proven reliability makes Excaliber a popular quality banner stand for prestige locations. Excaliber is the most feature-rich single or double-sided roller banner available and has been specially designed for maximum convenience and ease of use.

features & benefits

- Choice of 5 widths 800,1000,1200,1500 or 2000mm¹
- Can be used as a single or double sided banner
- Available in anodised silver with charcoal grey end caps
- Wide base provides extra stability
- Internal graphic housing designed to accommodate graphic media up to 450 microns thick²
- Secure slide in graphic system
- Ratchet tensioner
- Twist & lock telescopic pole
- Supplied with quality foam padded carry bag

¹ Double sided models available in 800 or 1000mm widths only

² Please test your substrate suitability before use



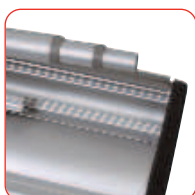
Excaliber 2



Universal grippa/
self-adhesive
top rail



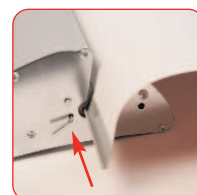
Ratchet
Tensioner*



Integral Pole
Storage



Telescopic Pole
(Twist & Lock)



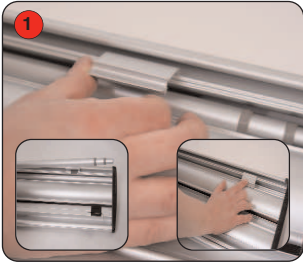
Slide-in Graphic

*Graphic tension may be re-applied or added to by turning the ratchet tensioner clockwise; 6 clicks of the ratchet tensioner equal 1 revolution of the banner stand spring. (NB Units are supplied pre-tensioned)

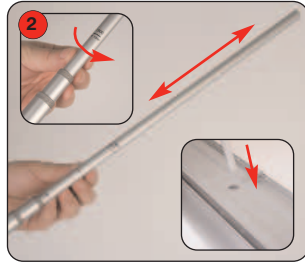
| hardware specifications | graphic specifications | additional info |
|--|--|--|
| <p>Hardware Dimensions (mm): 2230 max (h) x 855 (w) x 255 (d) approx. 87.80" (h) x 33.66" (w) x 10.00" (d) approx.</p> <p>Base Dimensions (mm): 80 (h) x 855 (w) x 255 (d) approx. 3.15" (h) x 33.66" (w) x 10.00" (d) approx.</p> <p>Weight: 6kg (13.2lbs) approx (including carry bag)</p> | <p>Visible Graphic Dimensions (mm): 2130 max (h) x 800 to 2000 (w) 83.85" max (h) x 31.50" to 78.74" (w)</p> <p>770 min (h) x 800 to 1000 (w) 30.30" min (h) x 31.50" to 78.74" (w)</p> <p>Substrate: Add 300mm (12") to base of graphic to allow for roller mechanism Recommened material thickness 225 - 450 microns (8.86 - 17.72 Mils)</p> | <p>Included in kit: Base, top rail(s), telescopic pole, pole doubler & carry bag. Please note that if the banner is over 1500mm wide it will be supplied with 2 poles.</p> |

Assembly Instructions

Banner stand assembly



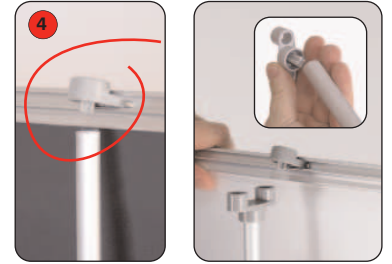
Turn the base over and open the pole retainers. Remove the pole from the base. **Important: Close the pole retainers before using the banner stand.**



Set the telescopic pole to the desired graphic height. **Twist clockwise to lock, anti-clockwise to unlock.** Fit the pole into the base.



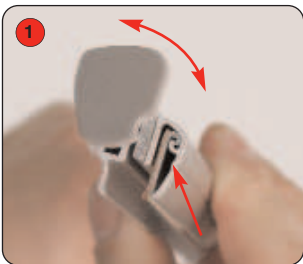
Lift the top rail to raise the graphic from the base. Lean the banner stand backwards and continue to extend the graphic.



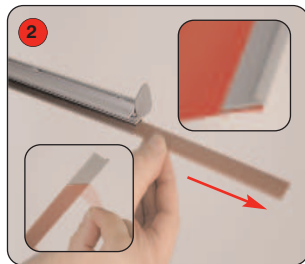
Secure the graphic into position by locating the top rail onto the pole. For double sided banners place the pole doubler onto the pole. Raise both top rails then secure onto the pole doubler.

NB Pole doubler is stored in a pocket inside the carry bag.

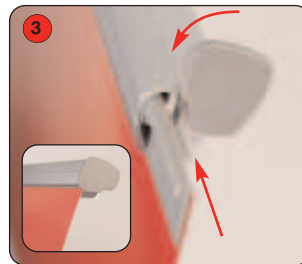
Graphic attachment - Adhesive rail option



Rotate the rail end cap to expose the plastic adhesive rail insert.



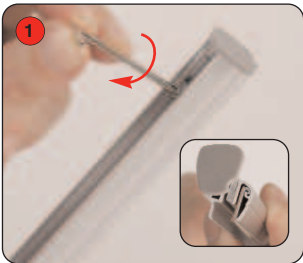
Slide the rail insert from the top rail. Adhere the insert to the **front** of the graphic.



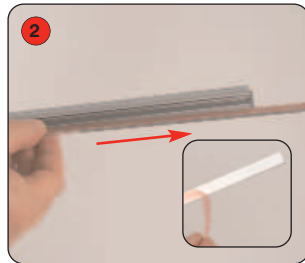
Slide the rail insert and graphic into the top rail. Close the rail end cap.

Important: Hold the top rail whilst lowering each banner to prevent damage to the graphic. (do not drop)

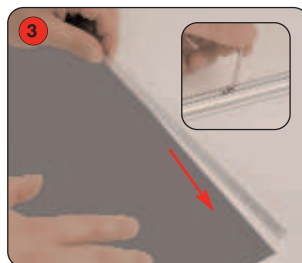
Graphic attachment - Grippa rail option (ideal for textiles and PVC)



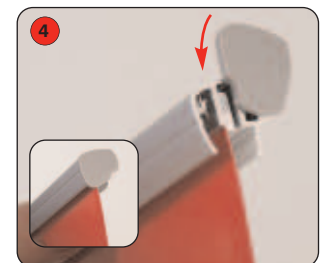
Using the Allen key stored in the base, loosen the top rail screws. Rotate the rail end cap to expose the steel flat bar.



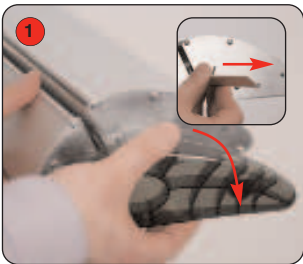
Slide the flat bar from the top rail and remove the backing paper.



Adhere the flat bar to the **back** of the graphic. Slide the flat bar and graphic into the top rail. Tighten the screws to secure the top rail. Close the rail end cap.



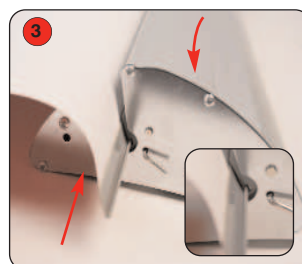
Graphic attachment - Base



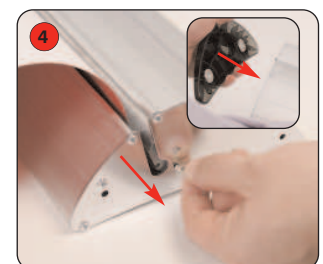
Remove one moulded end cap from the base. Slide the plastic insert from the base.



Adhere the insert to the **back** of the graphic.



Slide the insert and graphic into the base.



Whilst holding the graphic, remove the locking pin from the base and gently allow the graphic to retract. Re-fit the moulded end cap

WARNING: Always attach graphic to base and top rail before removing the locking pin.