

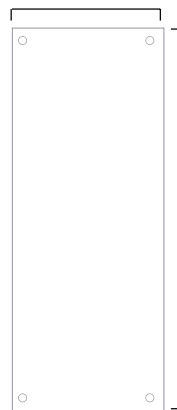


Specifically designed for indoor and outdoor promotions or high traffic areas of display. Blizzard's moulded base can be filled with either water or sand to provide stability in adverse weather conditions.

features & benefits

- Ideal for point of sale, retail display or exhibition environments
- Stylish design hollow plastic base for water or sand weighting agent
- Fully adjustable graphic height and width
- Graphic supported on simple eyelet system
- Weather resistant

800mm (max)
600mm (min)



2000mm (max)
1500mm (min)

Position eyelet centres 30mm
in from each graphic corner

Graphic dimensions and eyelet positioning



hardware specifications

Assembled Dimensions (mm):
2125 (h) x 800 (w) x 490 (d) approx
(based upon 2000 x 800 graphic)

Base footprint:
490 (w) x 350 (d) approx

Weight:
3.5kg approx when empty and 18.5kg
approx when filled with water.
(requires 15 litres approx)

graphic specifications

Recommended Graphic Dimensions:
2000 (h) x 800 (w) approx

Maximum Graphic Dimensions:
2000 (h) x 800 (w) approx

Minimum Graphic Dimensions:
1500 (h) x 600 (w)

Substrate:
Lightweight outdoor banner material
(solid or mesh type substrates)
Graphic requires 4 off 13mm eyelets
11.5mm recommended minimum
internal eyelet diameter

additional info

Included in kit:
Base, telescopic pole /support arms
and bottom rail.

Availability:
Anodised silver/blue base

Optional accessories:
Carry bag

We are continually improving and modifying our product range and reserve the right to vary the specifications without prior notice. All dimensions and weights quoted are approximate and we accept no responsibility for variance. E&OE.

Assembly Instructions



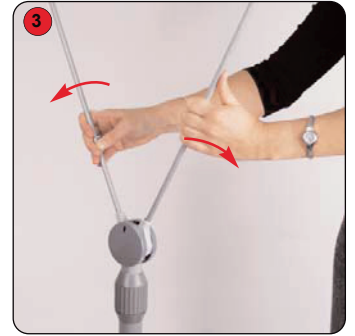
Kit includes: Base, telescopic pole /support arms and bottom rail.



1 Remove cap and fill the base with water or sand.



2 Insert the telescopic pole set into the base.



3 Open out the banner support arms.



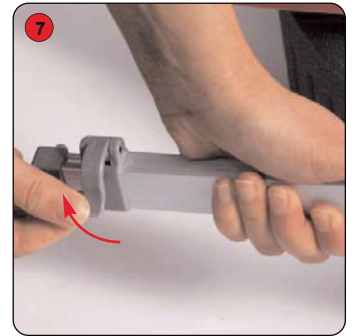
4 Attach the top graphic eyelets to the support arm hooks.



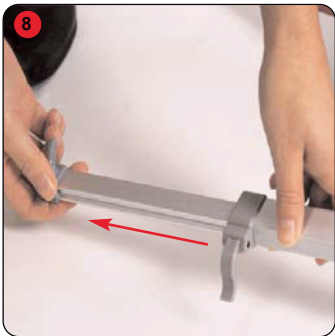
5 Twist the telescopic pole hub to the right to unlock, then raise the pole to the desired height.



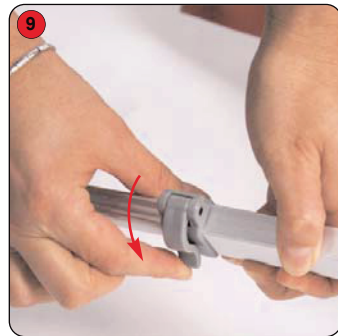
6 Twist the telescopic pole hub to the left to lock.



7 Unlock the telescopic bottom rail by lifting up the lever.



8 Extend the bottom rail to suit the graphic width.



9 Push down on the lever to lock the rail into place



10 Attach the bottom graphic eyelets to the rail hooks.



11 Slide the rail stay cord to the centre of the base.



12 If necessary adjust the telescopic pole to add tension to the graphic.

